

SLA · RESIN

Frosted Clear Resin — KS158T

Resin

Transparent ABS-like SLA resin offering clarity plus strength; frost-clear finish needs minimal post-processing.


45–60 MPa

TENSILE

11–20 %

ELONGATION

83

SHORE D

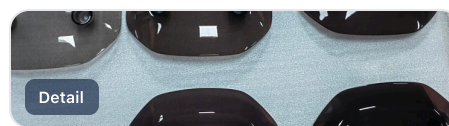
52 °C

HDT

MATERIAL OVERVIEW

Transparent ABS-like SLA resin offering clarity plus strength; frost-clear finish needs minimal post-processing.

PRINTED IN THIS MATERIAL



HIGHLIGHTS

- **Density:** 1.12 g/cm³
- **Viscosity:** 408 cps @26°C
- **Modulus:** 2580–2670 MPa
- **Flexural:** 75–83 MPa

IDEAL APPLICATIONS

- Automotive
- Footwear / shoe molds
- Medical & healthcare
- Sculpture & art
- Furniture & appliances
- Aerospace
- Architecture
- Molds & tools

MECHANICAL PROPERTIES

PROPERTY	VALUE	UNIT
Shore D	83	
Tensile	45–60	MPa
Modulus	2580–2670	MPa
Elongation	11–20	%
Flexural	75–83	MPa
Flexural modulus	2680–2790	MPa

PHYSICAL & THERMAL

PROPERTY	VALUE	UNIT
Density	1.12	g/cm ³
Viscosity	408	cps @26°C
HDT	52	°C
Tg	62	°C

