

SLA · RESIN

# Polished Clear Resin — KS158T

Resin

Transparent ABS-like SLA resin; full-clear finish for glass-like parts after polishing and clear coat.


**45–60 MPa**

TENSILE

**11–20 %**

ELONGATION

**83**

SHORE D

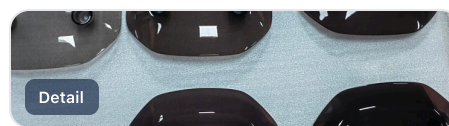
**52 °C**

HDT

## MATERIAL OVERVIEW

Transparent ABS-like SLA resin; full-clear finish for glass-like parts after polishing and clear coat.

## PRINTED IN THIS MATERIAL



## HIGHLIGHTS

- **Density:** 1.12 g/cm<sup>3</sup>
- **Viscosity:** 408 cps @26°C
- **Modulus:** 2580–2670 MPa
- **Flexural:** 75–83 MPa

## IDEAL APPLICATIONS

- Automotive
- Footwear / shoe molds
- Medical & healthcare
- Sculpture & art
- Furniture & appliances
- Aerospace
- Architecture
- Molds & tools

## MECHANICAL PROPERTIES

PROPERTY	VALUE	UNIT
Shore D	83	
Tensile	45–60	MPa
Modulus	2580–2670	MPa
Elongation	11–20	%
Flexural	75–83	MPa
Flexural modulus	2680–2790	MPa

## PHYSICAL & THERMAL

PROPERTY	VALUE	UNIT
Density	1.12	g/cm <sup>3</sup>
Viscosity	408	cps @26°C
HDT	52	°C
Tg	62	°C

