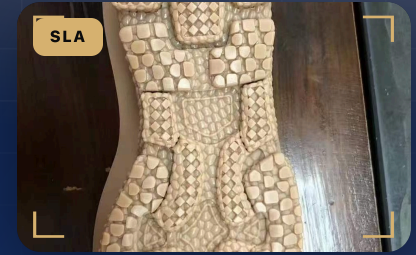


SLA · RESIN

Fine-Detail Resin — KS908C

Resin

Non-reflective brown ABS-like SLA resin with high accuracy and durability; best for fine detail and master patterns.


25–30 MPa

TENSILE

12–20 %

ELONGATION

74–82

SHORE D

58–68 °C

HDT

MATERIAL OVERVIEW

Non-reflective brown ABS-like SLA resin with high accuracy and durability; best for fine detail and master patterns.

PRINTED IN THIS MATERIAL



HIGHLIGHTS

- **Modulus:** 2150-2370 MPa
- **Flexural:** 60-75 MPa
- **Flexural modulus:** 2650-2750 MPa
- **Izod impact:** 58-70 J/m

IDEAL APPLICATIONS

Automotive

Footwear / shoe molds

Medical & healthcare

Sculpture & art

Furniture & appliances

Aerospace

Architecture

Molds & tools

MECHANICAL PROPERTIES

PROPERTY	VALUE	UNIT
Shore D	74–82	
Tensile	25–30	MPa
Modulus	2150–2370	MPa
Elongation	12–20	%
Flexural	60–75	MPa
Flexural modulus	2650–2750	MPa

PHYSICAL & THERMAL

PROPERTY	VALUE	UNIT
HDT	58–68	°C
Tg	55–70	°C
Density	1.14–1.16	g/cm ³


ADDITIVE +

Innovate. Create. Print the Future.

additiveplus.com · info@additiveplus.com · +1 (747) 800-4854 ·
Gardena, CA · USA



SCAN TO
REQUEST A
QUOTE