



SHINING 3D

**EinScan**

**2023 Partner  
Product Launch  
Briefing**

3D DIGITIZING | INTELLIGENT DESIGN | ADDITIVE MANUFACTURING



# EinScan H2

High Texture Resolution  
Handheld 3D Scanner

**Hybrid Light Source**  
**LED & Infrared VCSEL Light Source**

INTRO

# EinScan H2



Hybrid LED & Infrared VCSEL Light Source Handheld 3D Scanner



The EinScan H2 improves on its predecessor with a **5MP** resolution texture camera, enhanced accuracy, and **3 VCSEL projectors** for more photorealistic textures and better data quality.



3 Infrared VCSEL projectors



5MP texture camera

HIGHLIGHTS

# High Fidelity Color Reproduction

## 5MP texture camera

Captures rich, bright colors and clean textures for photorealistic 3D models.

Scanned  
data



Physical  
object





HIGHLIGHTS —

# Superior Environmental Adaptability

## 3 Infrared VCSEL Projectors

Provide superior material and lighting adaptability, effortlessly handling various surface types and scanning environments.





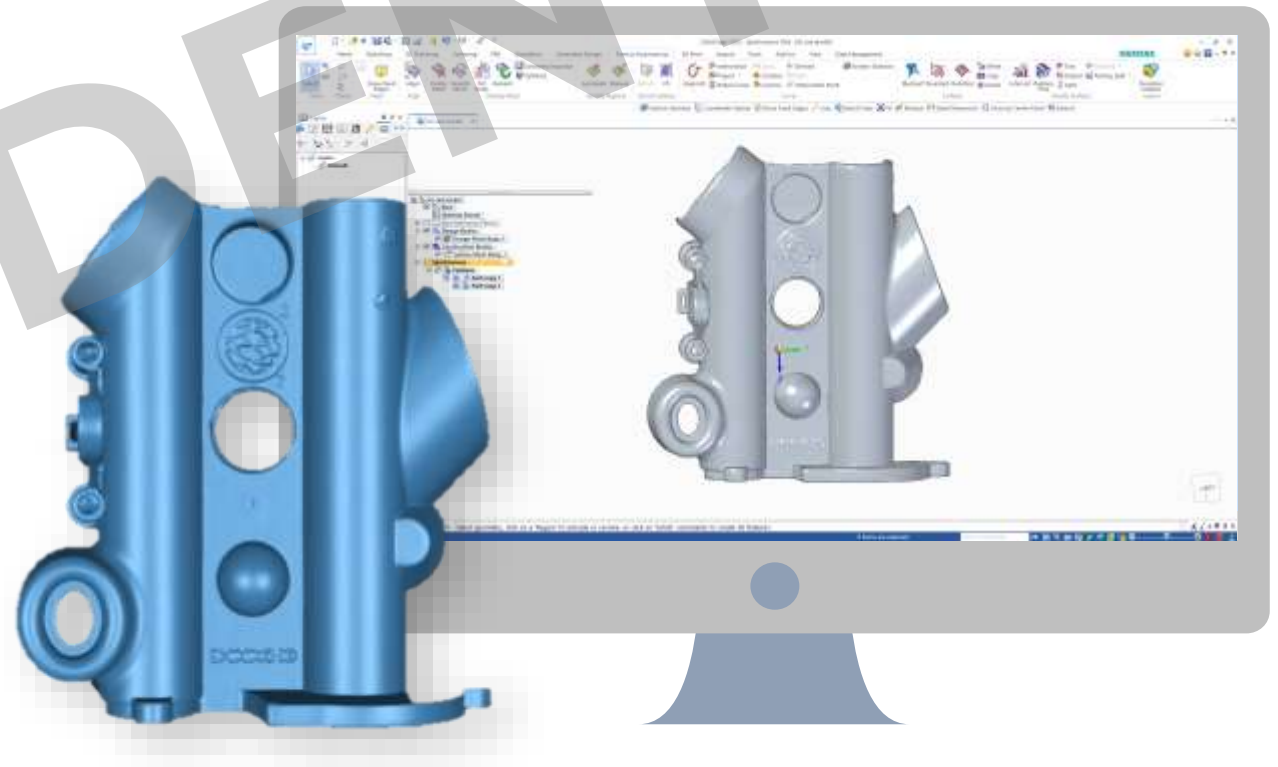
HIGHLIGHTS

# High Accuracy & Versatile

## Infrared VCSEL and White Light Hybrid Light Source

Dual light source improves scanning efficiency. LED light provides fast scanning with accurate and high quality data for professionals.

- Various scene from small to large
- Scanning speed: 1,200,000points/s
- Accuracy: Up to 0.05mm
- Point distance: Up to 0.2mm





## HIGHLIGHTS

# High Accuracy & Versatile

## Infrared VCSEL and White Light Hybrid Light Source

Infrared VCSEL enables non-rigid algorithm for human scan and various scanning environment.

- ✓ **Dark color objects**
- ✓ **Human body scan**
- ✓ **Outdoor scan**
- Accuracy 0.1mm
- Point distance: Up to 0.2mm



← Data scanned by IR Mode

Original physical object





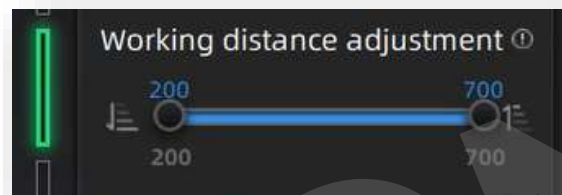


## HIGHLIGHTS

## Adjustable Working Distance & Large FOV

Enables **working distance adjustment**, **from 200mm to 1500mm**, to adapt to narrow or wide scenes more freely, and objects of various sizes much easier.

**FOV (Field of View)** up to **780mm x 900mm**. Offers flexibility in scanning volume to capture large-sized objects quickly.



Data scanned by IR mode

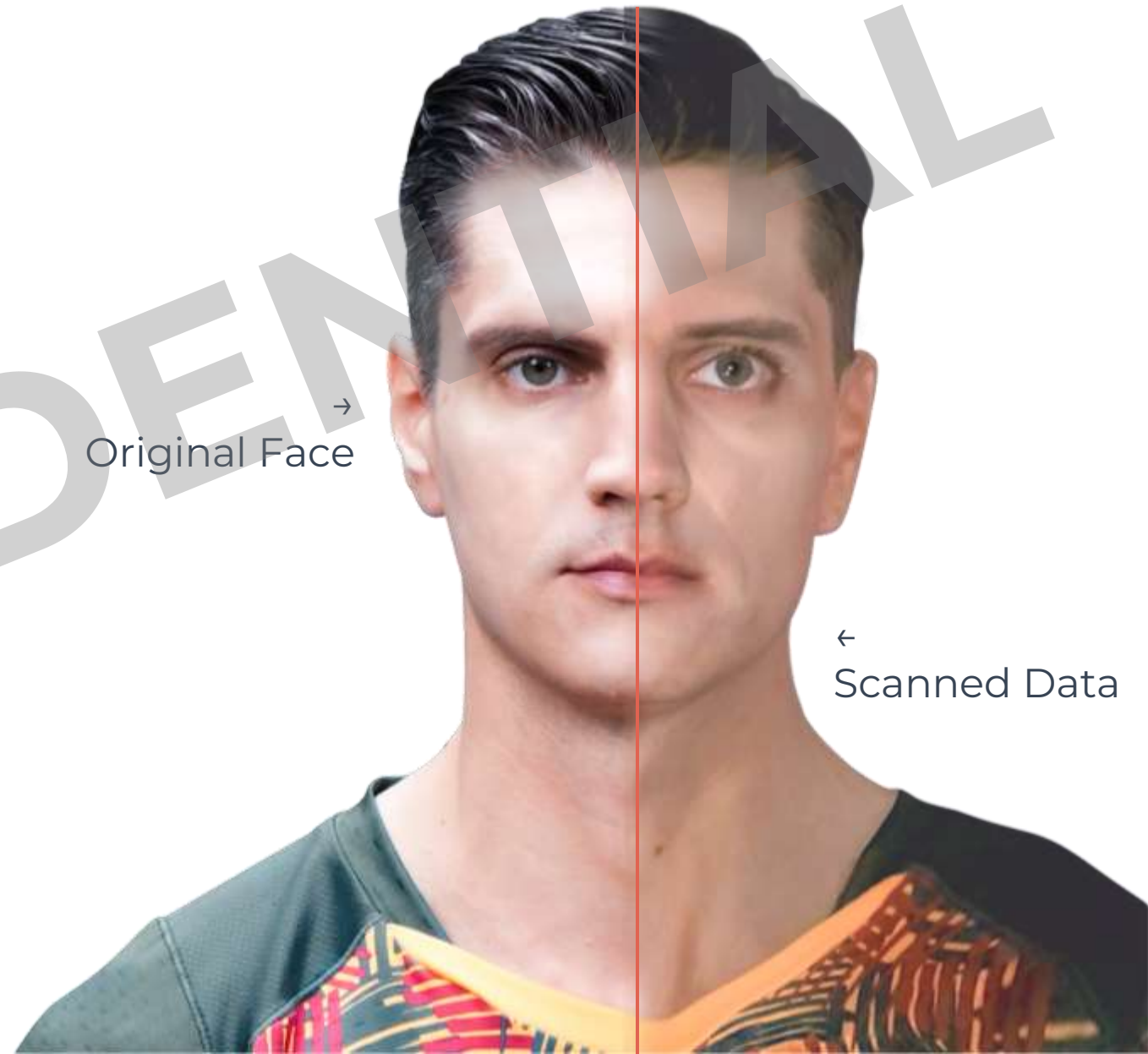


HIGHLIGHTS

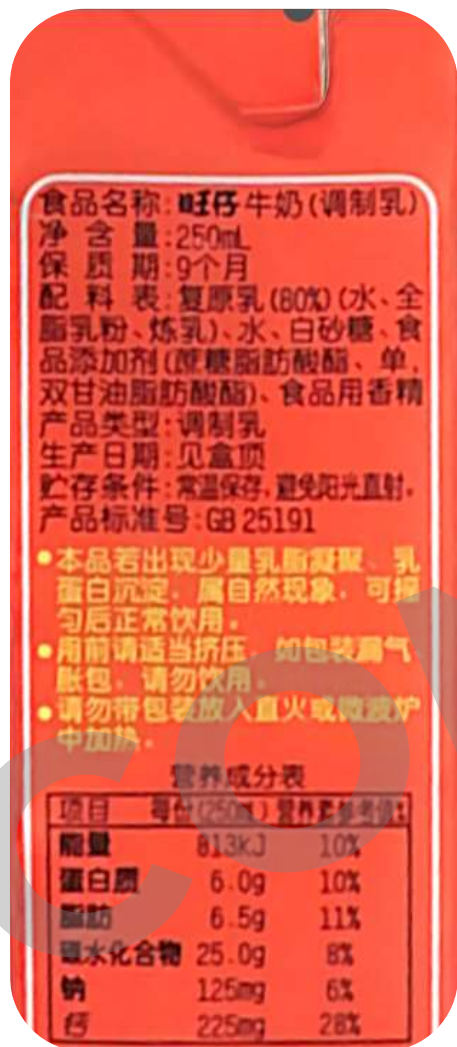
# Advanced Algorithm for Body Scan

- ✓ IR Mode Non-rigid Algorithm
- ✓ Hair Enhancement
- ✓ Flashless Scan

Captures 3D body data quickly and seamlessly, with auto-compensation of slight movements to eliminate misalignment risks. Hair mode designed to successfully capture light and dark hair.



# EinScan H2 vs H



## EinScan H2 | white light mode | 0.5mm

Scanning time	2min 19s
---------------	----------

Point cloud generation time	49s
-----------------------------	-----

Mesh time	2min 38s
-----------	----------

## EinScan H | white light mode | 0.5mm

Scanning time	2min
---------------	------

Point cloud generation time	25s
-----------------------------	-----

Mesh time	1min 02s
-----------	----------



COMPARISON

# EinScan H2 vs H



## EinScan H2 | white light mode | 0.5mm

Scanning time 3min 17s

Point cloud generation time 58s

Mesh time 3min 14s

## EinScan H | white light mode | 0.5mm

Scanning time 3min 38s

Point cloud generation time 46s

Mesh time 1min 31s







Scan to view full data

COMPARISON

# EinScan H2 vs H



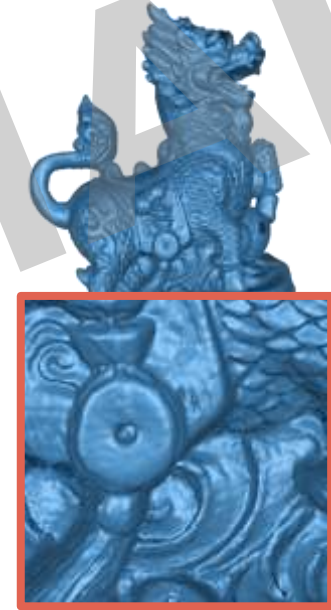
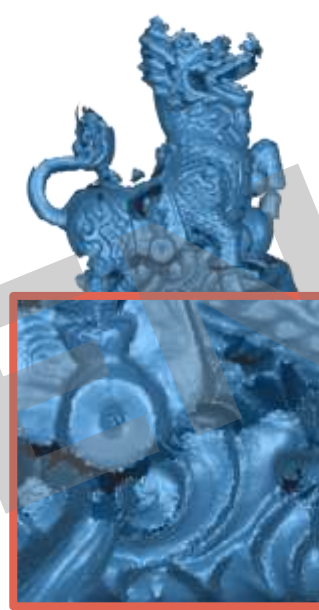
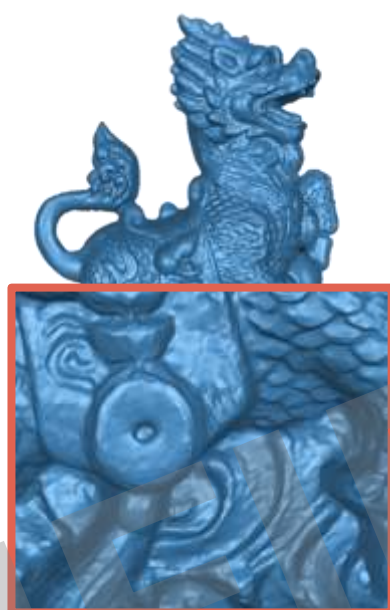
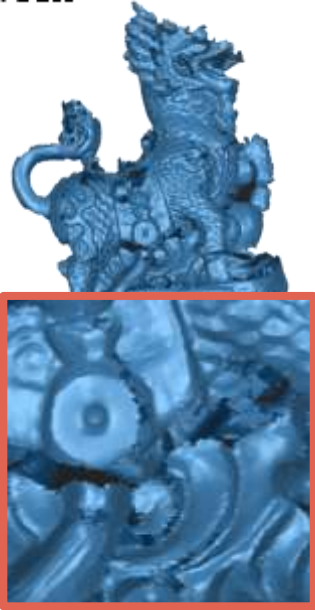
	EinScan H2   IR mode   0.25mm	EinScan H2   IR mode   1mm	EinScan H   IR mode   0.25mm	EinScan H   IR mode   1mm
	3mins 22s	2mins 8s	3mins 45s	2mins 20s
	11mins 49s	1mins 36s	11min 22s	1min 43s
	/	2mins 5s	18mins 29s	2mins 3s



Scan to view full data

COMPARISON

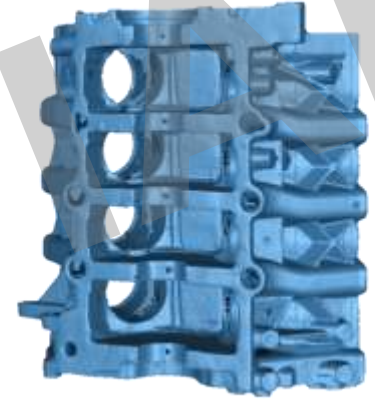
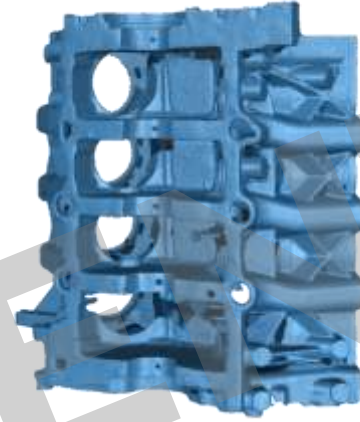
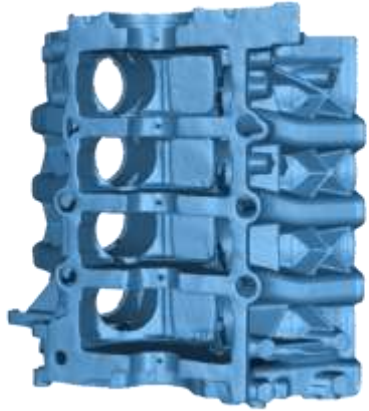
# EinScan H2 vs H



	EinScan H2   white light mode   0.2mm	EinScan H2   IR mode   0.2mm	EinScan H   white light mode   0.25mm	EinScan H   IR mode   0.25mm
	2mins 05s	3min 05s	2mins 2s	1min 19s
	40s	1min 39s	30s	1min 3s
	38s	31s	22s	22s

COMPARISON

# EinScan H2 vs H



	EinScan H2   white light mode   0.2mm	EinScan H2   IR mode   0.2mm	EinScan H   white light mode   0.25mm	EinScan H   IR mode   0.25mm
	4mins 10s	5min	4min 58s	4min 40s
	1min 13s	3min 45s	1min 24s	3min 32s
	43s	50s	44s	44s



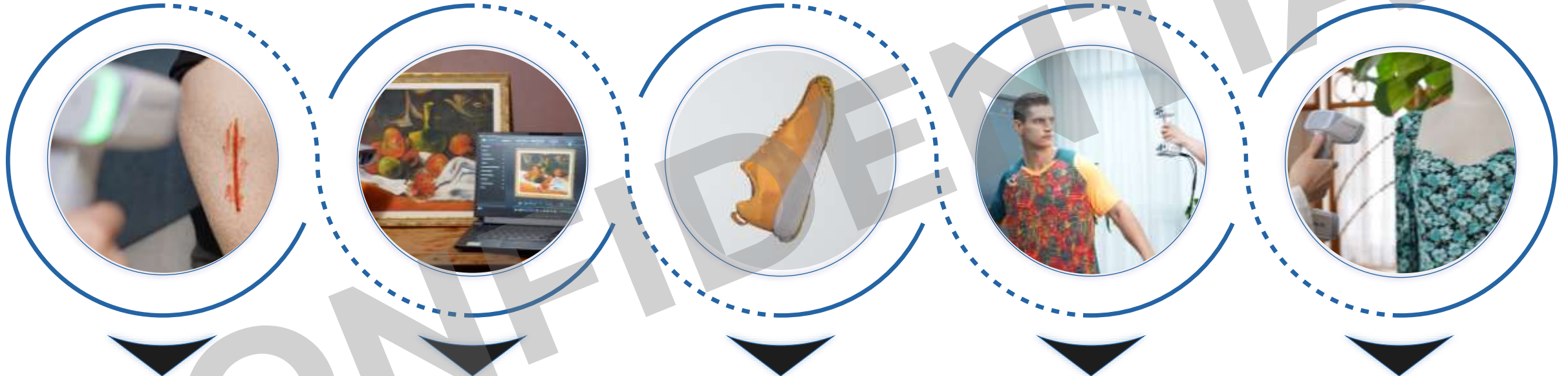


# Specification

Scan Mode	White Light Mode	IR Mode
Light Source	White LED Light, Visible	Infrared VCSEL Light, Invisible
Scan Accuracy	Up to 0.05mm	Up to 0.1mm
Volumetric Accuracy	0.05mm+0.1mm/m	0.1mm+0.3mm/m
Point Distance	0.2mm~3mm	
Best Working Distance	470mm	
Effective working Distance Range	200mm~700mm	200mm~1500mm
Maximum FOV	420mm*440mm	780mm*900mm
Scan Speed	1,200,000points/s	1,060,000points/s
Texture Resolution	5MP	
Align Modes	Markers Alignment, Feature Alignment, Hybrid Alignment, Texture Alignment	Feature Alignment, Hybrid Alignment, Texture Alignment, Global Markers
Safety	LED light (eye-safe)	CLASS I (eye-safe)
Built-in Color Camera	Yes	
Texture Scan	Yes	
Software Included	EXScanH; Solid Edge SHINING 3D Edition	
Output Formats	OBJ, STL, ASC, PLY, P3, 3MF	
Size	108 mm x 110 mm x 237 mm	
Scanner Body Weight	731.1 g	
Operating Temperature Range	0°C ~ 40°C	
Operating Humidity Range	10% RH ~ 90% RH	
Certifications	CE, FCC, ROHS, WEEE, KC	
Interface	USB 3.0	
Input Voltage	DC: 12 V, 5.0 A	
Recommended Configuration	OS: Win10/11, 64-bit; Graphics card: NVIDIA GTX/RTX, RTX2060 or better; Video memory: ≥6GB; Processor: Intel I7-11700 or better; Memory: ≥64GB	
Required Configuration	OS: Win10, 64-bit; Graphics card: NVIDIA GTX1060; Video memory: ≥4GB; Processor: Intel I7-8700; Memory: ≥16GB	

EinScan H2

# Application Industry



Healthcare &  
Forensic

Cultural heritage &  
Academic research

VR & AR

CGI and VFX

Art & Design

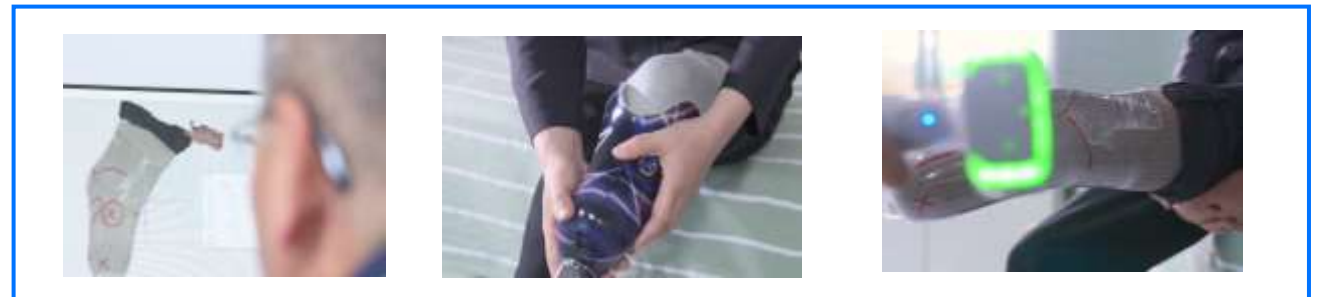
CASE —

# Prosthetic Socket



## Background:

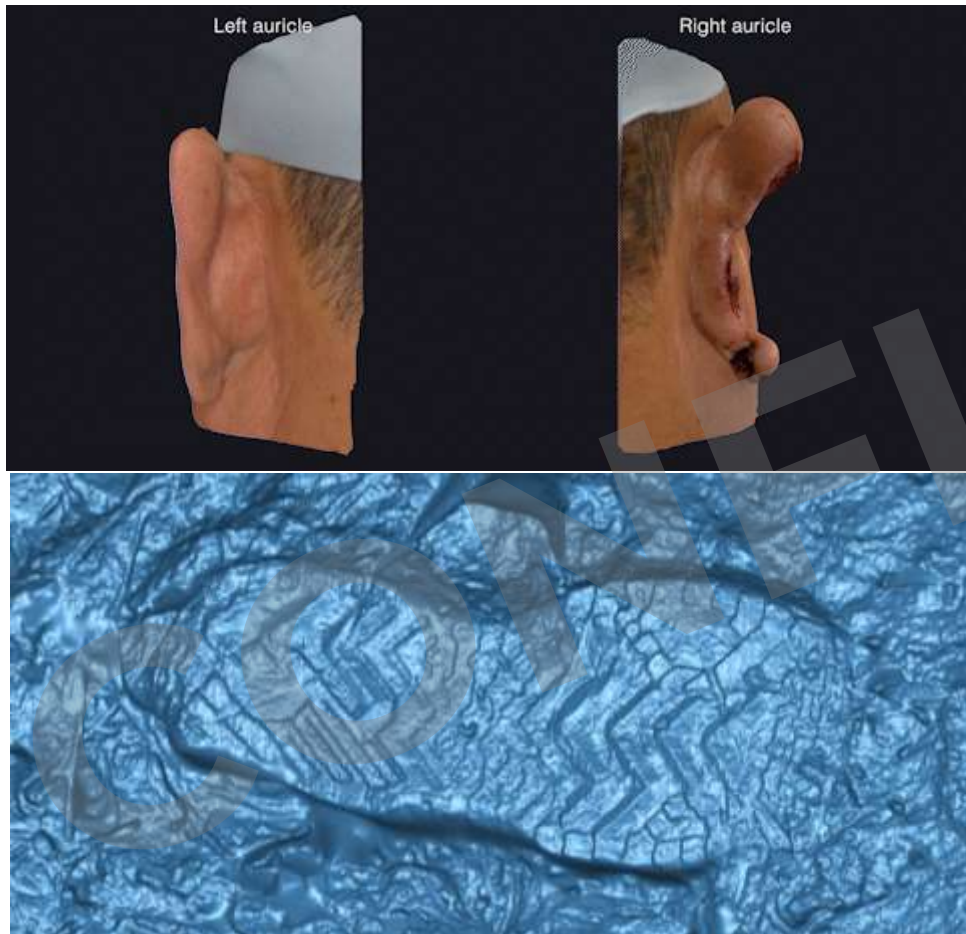
- EinScan & Luke Rehabilitation
- **Traditional production method:** If the prosthetic socket does not fit the residual limb properly, it can cause pain to the patient, secondary trauma to the skin or damage to the patient's bones.
- **3D digitizing method:** High-precision 3D model of the patient's residual limb can be imported into the modeling software to make the socket.





CASE —

# Forensic Science



## Background:

- Crime scene documentation and preservation
- Management of physical evidence
- Injury analysis
- ...

Comparing with the traditional free proof, this digital method preserved the original injury information and gives a more exact and authoritative result.



CASE —

# CGI & VFX



## Background:

- High resolution textures are essential for creating realistic and immersive environment, characters and prop making.
- VFX artists can use the 3D model easily without a tedious post processing.



CASE —

# 3D Digital Content



## Background:

- Education: create interactive educational materials
- Advertising and marketing: high-resolution 3D digital models for use in online stores
- Heritage conservation: Visualization of artifacts or museum collections
- ...





COMPARISON

# Competition Comparison



Data Detail



Texture Quality



Body Scan



Car Part Scan



**\$3,980**



**\$8,490**

CONFIDENTIAL



COMPARISON

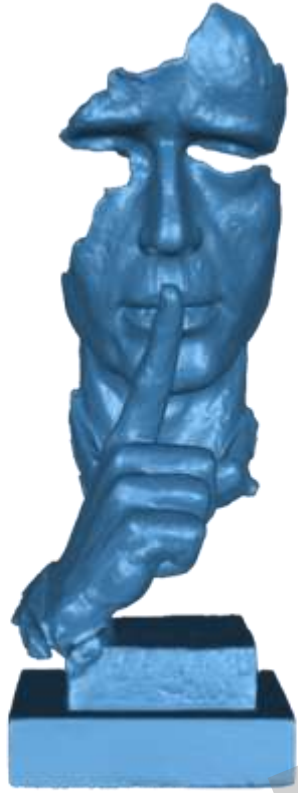
# Competition Comparison

Model	Peel 3	iReal 2E	EinScan H2-White Light	EinScan H2-IR
<b>Mode of Alignment</b>	Hybrid (Feature/Markers/Texture)	Feature, Texture, Hybrid	Feature, Markers, Texture, Hybrid	Feature, Texture, Hybrid, Global Markers
<b>Scan Accuracy</b>	Up to 0.1mm	Up to 0.1mm	<b>Up to 0.05mm</b>	<b>Up to 0.1mm</b>
<b>Scan Speed</b>	80s/m <sup>2</sup>	Up to 1500000 points/s	1,200,000points/s	1,060,000points/s
<b>Point Distance</b>	0.25mm	0.2mm~3mm	<b>0.2mm-3mm</b>	
<b>Texture Resolution</b>	250DPI (≈5MP)	1.3MP	<b>5MP</b>	
<b>Light Source</b>	IR VCSEL	IR VCSEL	<b>White LED Light</b>	IR VCSEL
<b>Max FOV</b>	340mm*475mm	580mm*550mm	420mm*440mm	780mm*900mm
<b>Output Format</b>	dae,fbx,ma,obj,ply,stl,txt,wrl, x3d,xdz,zpr,dxf,iges,step	obj, ply, stl, asc, sk	OBJ, STL, ASC , PLY, P3, 3MF	
<b>Weight</b>	950g	850g	<b>731.1 g</b>	



# .Medium Object

Stone carving (126mm\*116mm\*348mm)



**EinScan H2 | white light mode | 0.2mm**

**EinScan H2 | IR mode | 0.2mm**

**Peel 3, 0.25mm**

**iReal 2E, 0.25mm**

2min 03s

2min 09s

2min 06s

2min 05s

20s

32s

24s

44s

27s

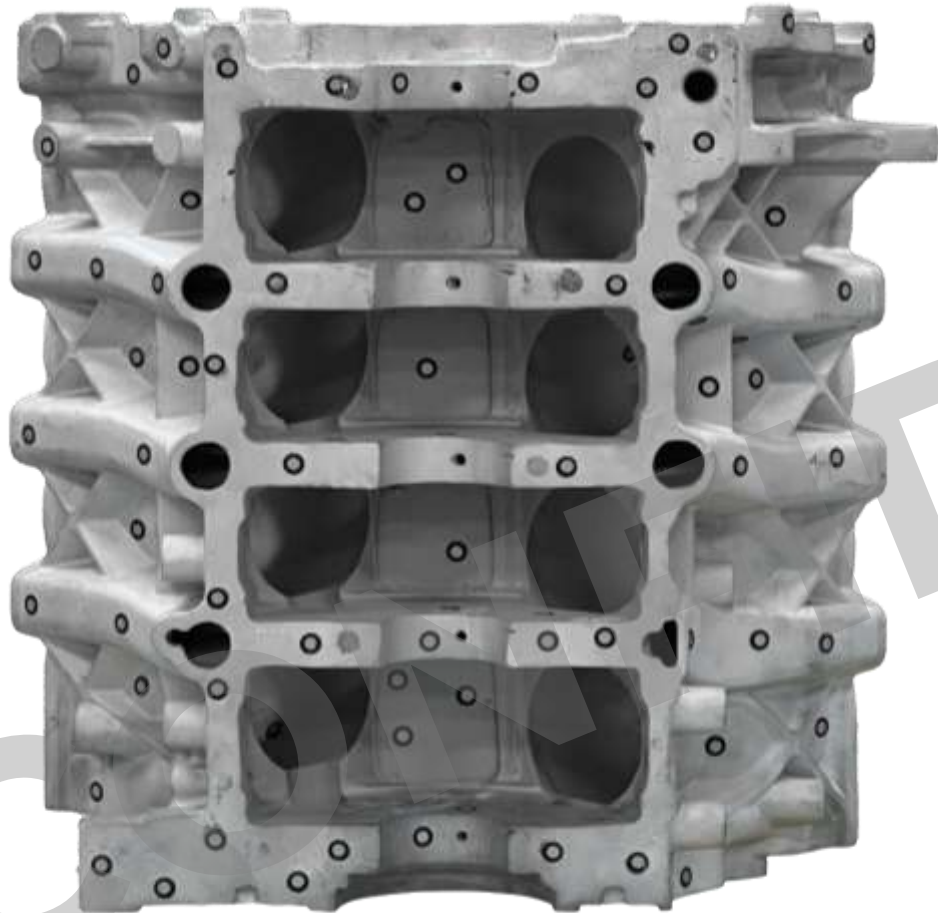
33s

/

1min 17s





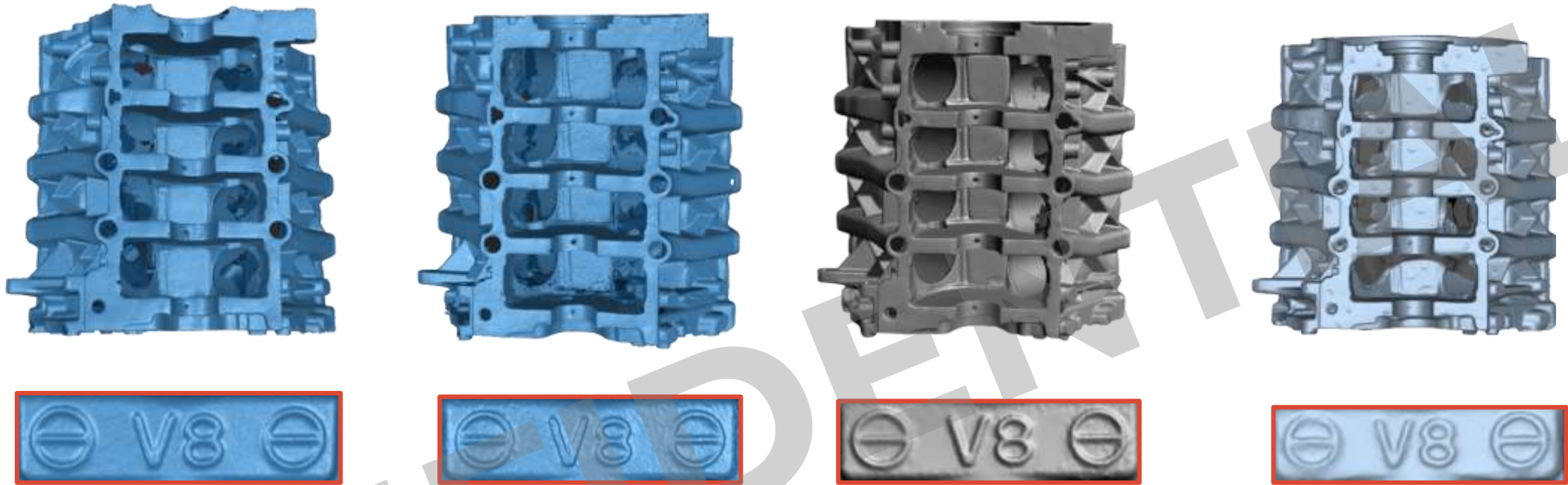



CONFIDENTIAL



# .Medium-large Object

Engine (400mm\*200mm\*438mm)



	EinScan H2   white light mode   0.2mm	EinScan H2   IR mode   0.2mm	Peel 3, 0.25mm	iReal 2E, 0.25mm
	4min 10s	5min	4min 41s	6min 10s
	1min 13s	3min 45s	2min 10s	6min 05s
	43s	50s	/	8min 04s

- The scanning speed of **Peel 3** and **EinScan H2** is almost the same. While **iReal 2E** is much slower.



# .Object Detail

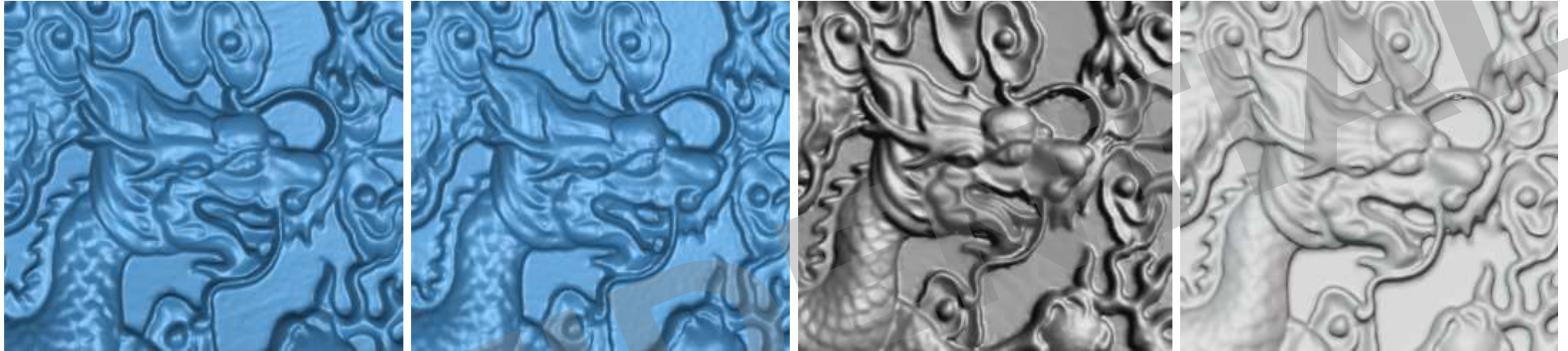
Wood carving



ESSENTIAL







	EinScan H2   white light mode   0.25mm	EinScan H2   IR mode   0.25mm	Peel 3, 0.25mm	iReal 2E, 0.5mm
	30s	35s	28s	38s
	10s	12s	10s	9s
	13s	12s	/	11s

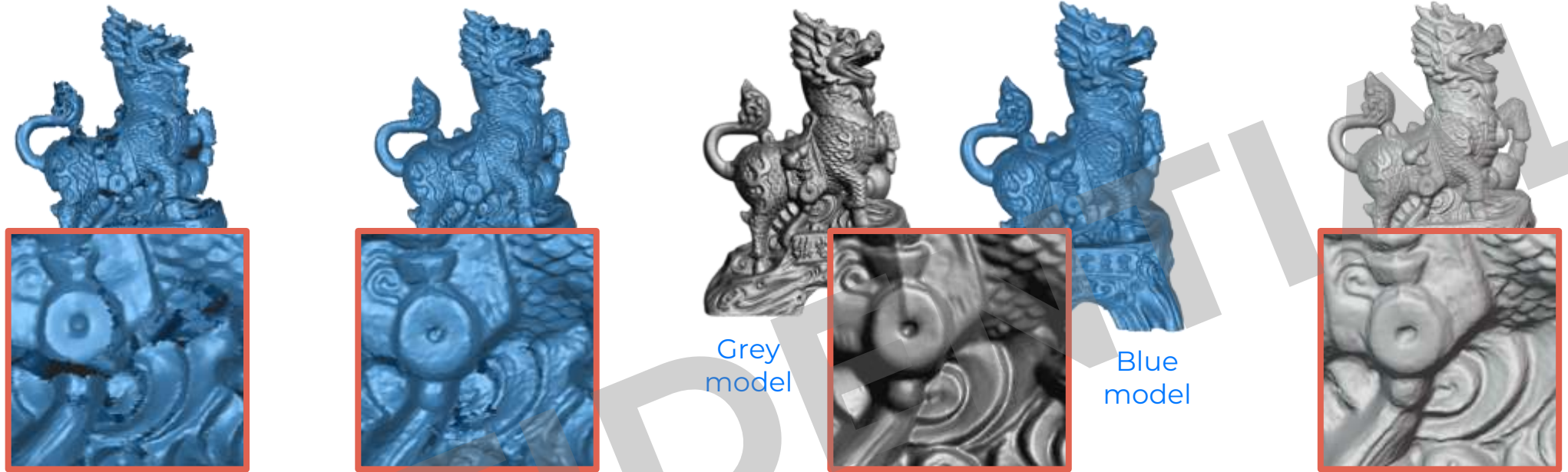
Generally speaking, **EinScan H2** (white light mode) got the best data details, followed by **Peel 3**.





# .Object Detail

Kirin ornament



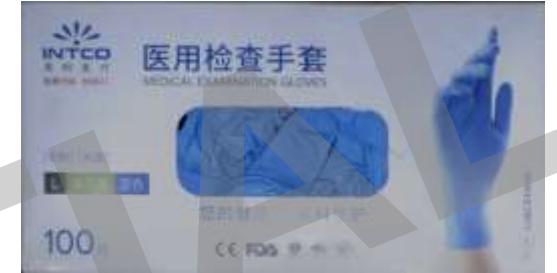
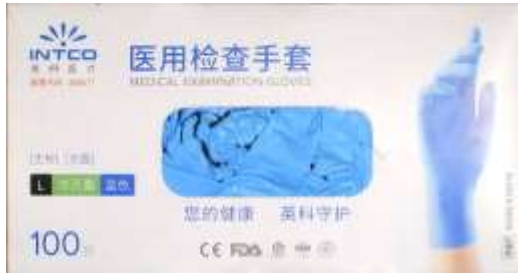
Grey model

Blue model

	EinScan H2   white light mode   0.2mm	EinScan H2   IR mode   0.2mm	Peel 3, 0.25mm	iReal 2E, 0.25mm
	2min 58s	1min 54s	1min 15s	1min 18s
	35s	50s	14s	32s
	23s	21s	/	1min 24s

For such reddish-brown objects, infrared light can capture more data than white light. Comparing these scan results, the EinScan H2 got the most complete data and the clearest detail.





【产品名称】医用检查手套  
 【型号规格】无粉光面、有粉光面;XL,L,M,S,XS  
 【备案人/生产企业/售后服务单位名称】山东英科医疗  
 【备案人/生产企业住所】山东省潍坊市青州市锦山工业  
 【生产地址】山东省潍坊市青州市锦山工业园齐王路98  
 【备案人/生产企业/售后服务单位联系方式】山东省潍  
 5:0536-6136888 邮编:262500  
 【医疗器械备案凭证编号】鲁潍械备20200028号  
 【医疗器械生产备案凭证编号】鲁潍食药监械生产备20

【产品名称】医用检查手套  
 【型号规格】无粉光面、有粉光面;XL,L,M,S,XS  
 【备案人/生产企业/售后服务单位名称】山东英科医疗  
 【备案人/生产企业住所】山东省潍坊市青州市锦山工  
 【生产地址】山东省潍坊市青州市锦山工业园齐王路  
 【备案人/生产企业/售后服务单位联系方式】山东省潍  
 电话:0536-6136888 邮编:262500  
 【医疗器械备案凭证编号】鲁潍械备20200028号  
 【医疗器械生产备案凭证编号】鲁潍食药监械生产备20  
 【医疗器械技术要求编号】鲁潍械备20200028号

【产品名称】医用检查手套  
 【型号规格】无粉光面、有粉光面;XL,L,M,S,XS  
 【备案人/生产企业/售后服务单位名称】山东英科医疗  
 【备案人/生产企业住所】山东省潍坊市青州市锦山工  
 【生产地址】山东省潍坊市青州市锦山工业园齐王路  
 【备案人/生产企业/售后服务单位联系方式】山东省潍  
 电话:0536-6136888 邮编:262500  
 【医疗器械备案凭证编号】鲁潍械备20200028号  
 【医疗器械生产备案凭证编号】鲁潍食药监械生产备20  
 【医疗器械技术要求编号】鲁潍械备20200028号

【产品名称】医用检查手套  
 【型号规格】无粉光面、有粉光面;XL,L,M,S,XS  
 【备案人/生产企业/售后服务单位名称】山东英科医疗  
 【备案人/生产企业住所】山东省潍坊市青州市锦山工  
 【生产地址】山东省潍坊市青州市锦山工业园齐王路  
 【备案人/生产企业/售后服务单位联系方式】山东省潍  
 电话:0536-6136888 邮编:262500  
 【医疗器械备案凭证编号】鲁潍械备20200028号  
 【医疗器械生产备案凭证编号】鲁潍食药监械生产备20  
 【医疗器械技术要求编号】鲁潍械备20200028号

EinScan H2   white light mode   0.2mm	EinScan H2   IR mode   0.2mm	Peel 3, 0.25mm	iReal 2E, 0.25mm
1min 12s	1min 3s	35s	1min 29s
1min 17s	1min	21s	26s
3min 27s	3min	/	1min 21s

EinScan H2 gets the clearest texture details.





CONFIDENTIAL






# .Body Scan

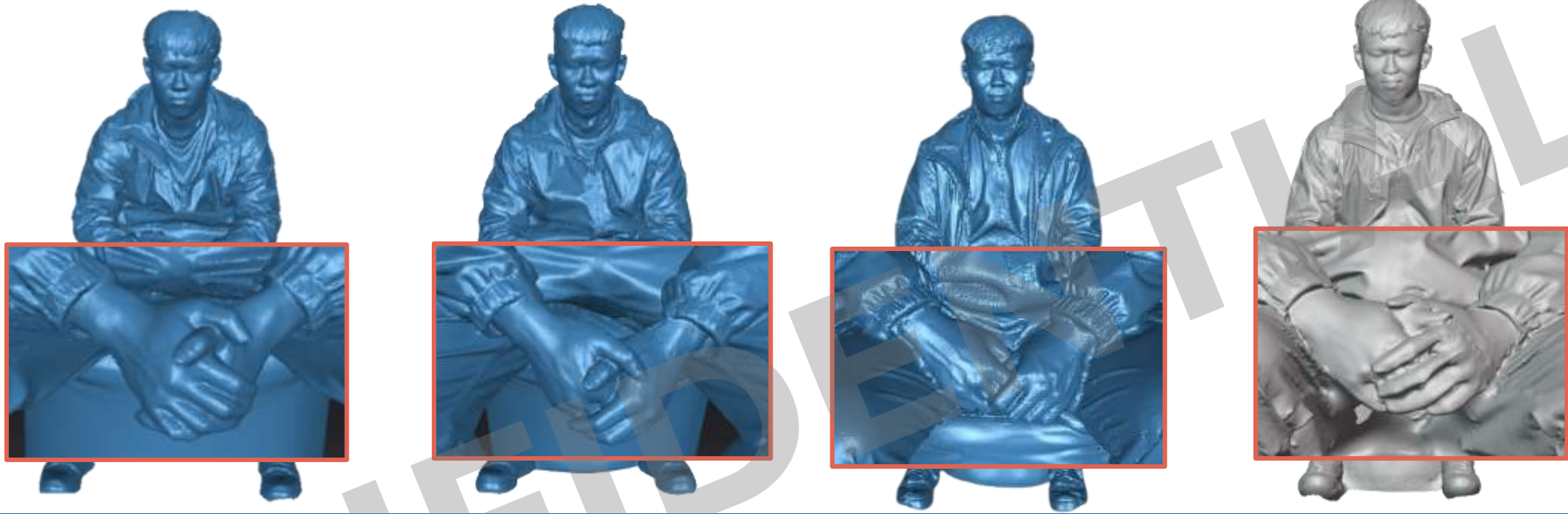
Bobby (186cm)






	EinScan H2   IR mode   0.2mm	EinScan H2   IR mode   1mm	Peel 3, 0.25mm	iReal 2E, 1mm
	3min 22s	2min 8s	6min 20s	4min 18s
	11min 49s	1min 36s	28min 30s	2min 10s
	/	2min 5s	/	8min 44s

- **EinScan H2** gets the texture which is closest to the real person.
- The data texture scanned by **Peel3** and **iReal2E** is darker than the real person.



	EinScan H2   IR mode   0.2mm	EinScan H2   IR mode   1mm	Peel 3, 0.25mm	iReal 2E, 1mm
	3min 22s	2min 8s	6min 20s	4min 18s
	11min 49s	1min 36s	28min 30s	2min 10s
	/	2min 5s	/	8min 44s

- The data detail scanned by **Peel 3** is better, but has the most noise data.
- **Peel 3** has longer scanning time and processing time.



# .Car Part Scan

Car body (4638mm\*1991mm\*1345mm,  
shiny surface)



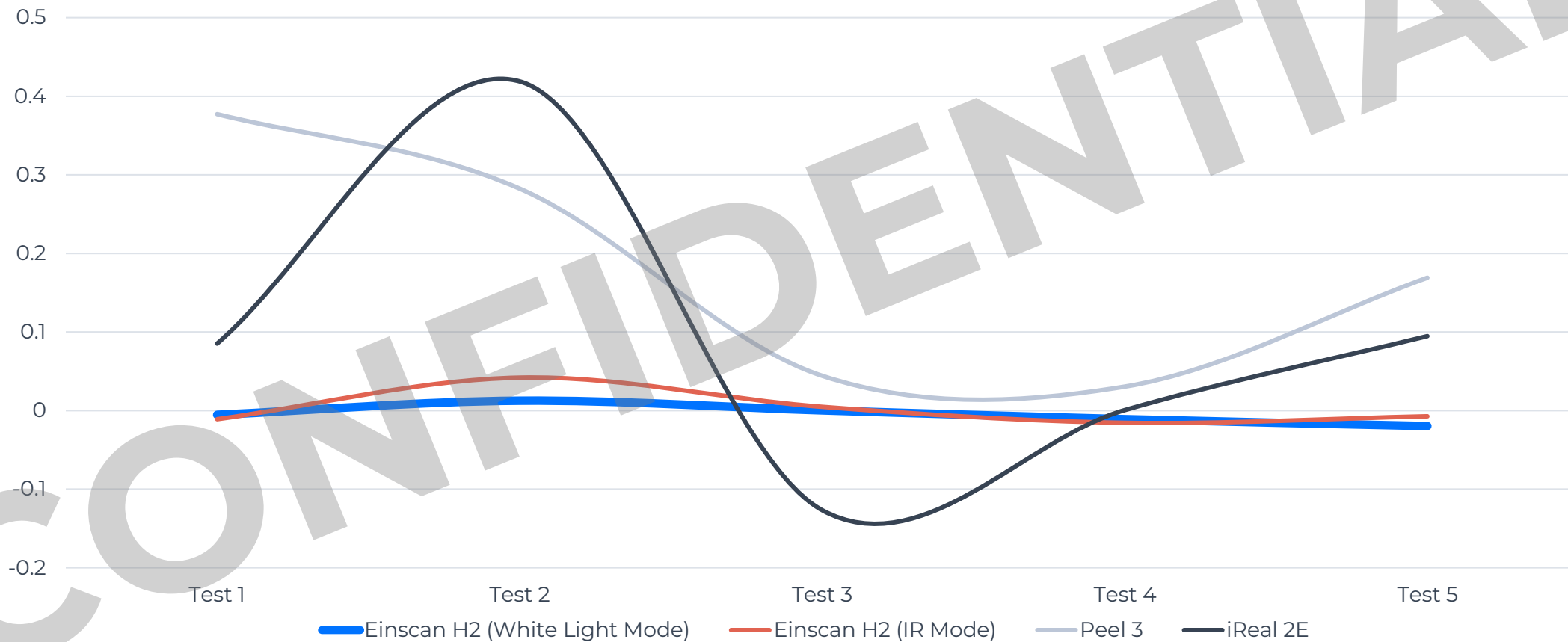


	EinScan H2   white light mode   1mm	EinScan H2   IR mode   1mm	Peel 3, 0.25mm	iReal 2E, 1mm
	12min 07s	10min 50s	6min 49s	10min 37s
	37s	1min 02s	2min 10s	32s
	27s	36s	/	47s

The scanning speed of **Peel 3** is the fastest because it doesn't need to scan the global markers in advance.

COMPARISON

# Accuracy Comparison



COMPARISON

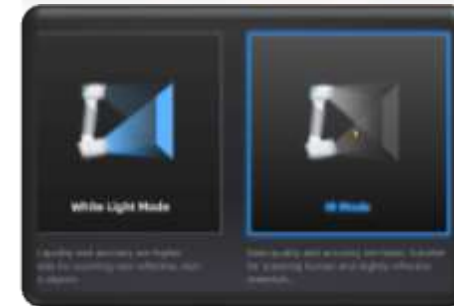
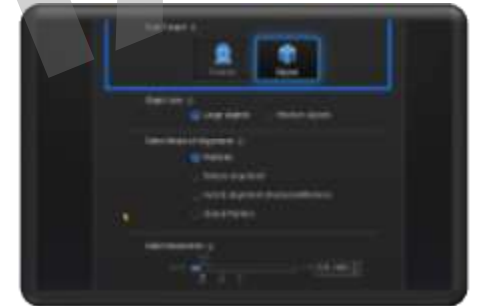
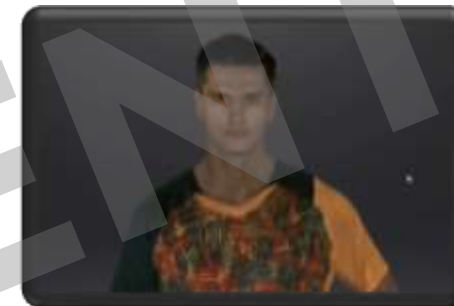
## EinScan H2 vs H

In conclusion, EinScan H2 has **the best color texture quality,** comparative advantage of good quality in geometry resolution. And our bigger **FOV** makes it be more adaptable to different applications.



SOFTWARE

# EXScan H2





SALES PLAN

# Price

	MSRP	Launch Price*
North America	5,299 USD	<b>4,999 USD</b>
APAC/Latin America	4,999 USD	<b>4,599 USD</b>
EMEA	4,999 EUR	<b>4,599 EUR</b>

\*Price within one month of public product launch

**Launch Discount**

# Trade-in

- **Time: Within one month after official launch**
- **Any scanner**, not limited to the brand, price or use of the used scanner.
- We offer a special discount price for trade-in orders.

## End Customer

Up to **\$1,500 / €1,500**  
Discount

## Reseller Discount

North America: **\$2,999**

APAC/Latin America: **\$2,599**

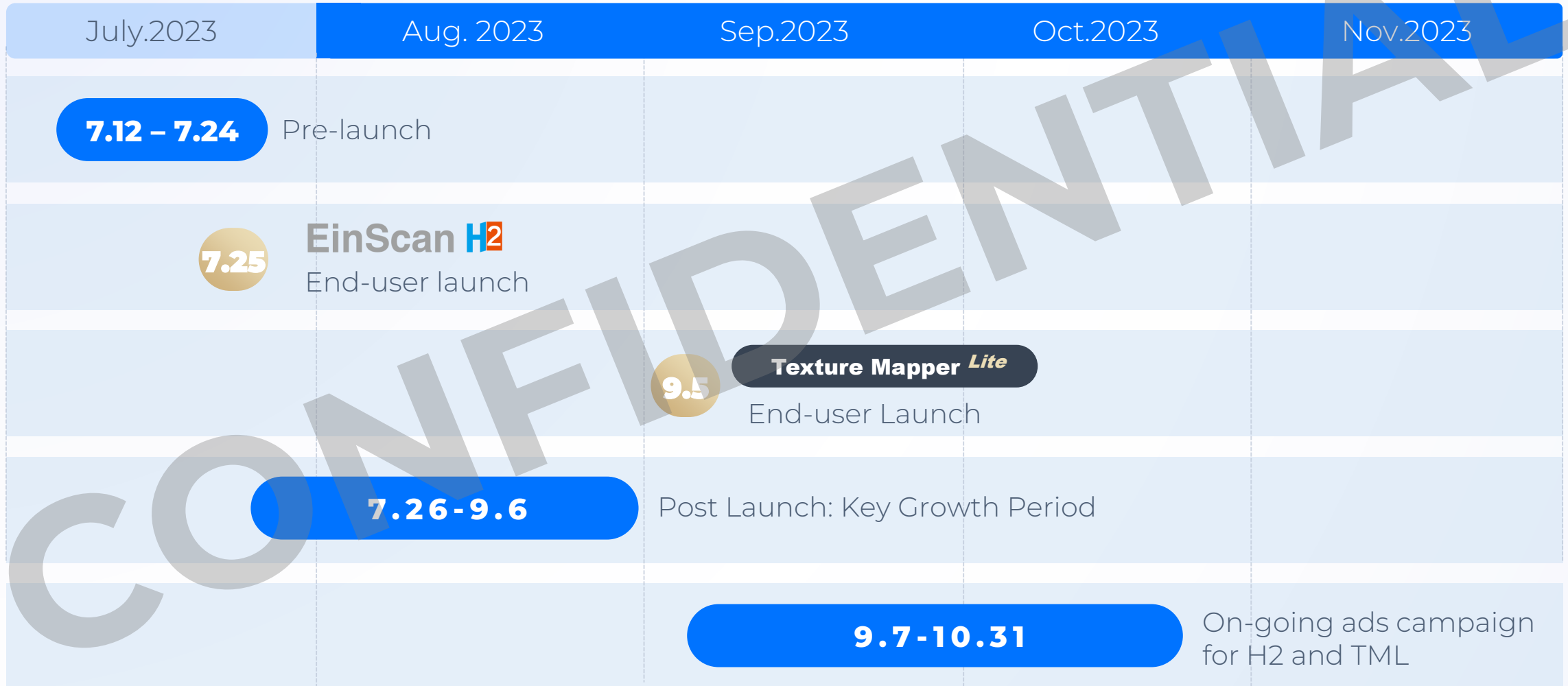
EMEA: **€2,599**



# Official Launch Marketing plan



# Launch roadmap



# Pre-launch

- An EDM will be sent to your email address that includes a link to all the marketing material available so far
- Share two rounds of teasers on **July 14** and **July 21**
- Prepare your own website content and update the EinScan H product page
- Please DON'T leak the specs and exterior design before the official launch date



# EinScan H2 Launch day

## EinScan H2 Official Launch Time

July 25<sup>th</sup> 9:00AM CST (Beijing)

July 25<sup>th</sup> 3:00AM EST (Berlin)

July 24<sup>th</sup> 21:00PM EDT (New York)

July 24<sup>th</sup> 18:00PM PDT (San Francisco)

Your marketing material should be posted **NO EARLIER** than this point of time.

- Official launch announcement EDM to potential leads inquiries from SHINING 3D
- Release new website product page
- Post launch PR article on website
- Post scan data on SketchFab
- Social media posts

# After launch

## #EinScanH2NewLevel

- General hashtag
- Please include this tag to increase overall exposure

## #EinScanH2Stories

- Every alternate Friday
- User case studies
- Partner & user testimonials
- Contributions are welcomed



## #EinScanH2Highlight

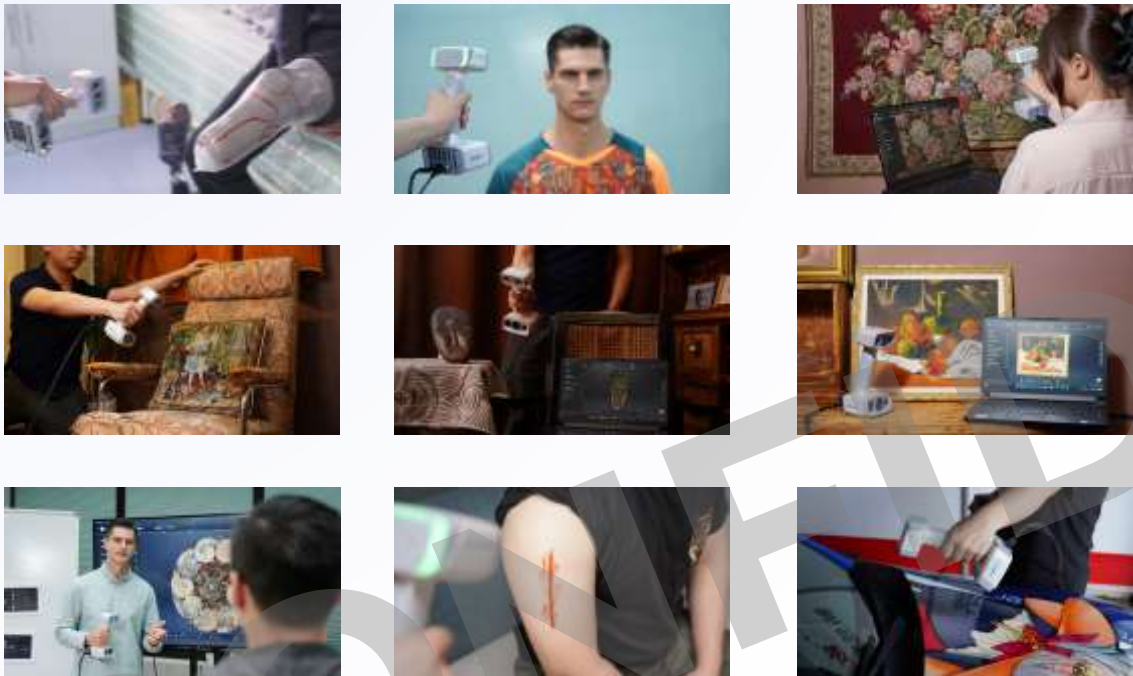
- Every Wednesday
- Product Competitiveness
- Pics and captions are available on seafile

## #scandatatuesday

- Every Tuesday
- Scan data sharing
- Also available on SketchFab
- Feel free to download and shar the data



# After launch



**Application photos  
(9 scenarios)**



Prosthetics



Visual effects



Virtual display

.....

**Dedicated webinars based on  
customers' feedback & application fields**

Keep eyes on customers' feedbacks  
share you ideas to [marketing@shining3d.com](mailto:marketing@shining3d.com)

# Texture Mapper Lite launch day

## Texture Mapper Lite Official Launch Time

September 5<sup>th</sup> 9:00AM CST (Beijing)

September 5<sup>th</sup> 3:00AM EST (Berlin)

September 4<sup>th</sup> 21:00PM EDT (New York)

September 4<sup>th</sup> 18:00PM PDT (San Francisco)

Your marketing material should be posted **NO EARLIER** than this point of time.



SHINING 3D

# Thank You

2023 EinScan Partner Product Launch Briefing